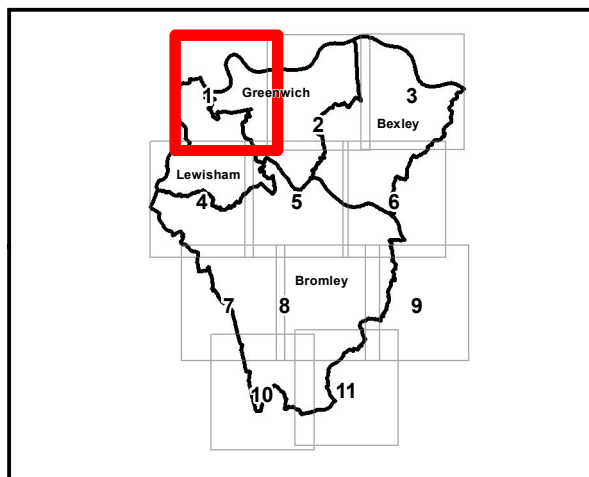


Key Plan



**Legend**

- Wards
- South-East London Boroughs
- Economic Activity**
- Railway Stations
- Railway Track
- National Receptors Database**
- Education
- Healthcare and Medical Services
- Emergency Services
- Nursing, Retirement and Rest Homes
- Water Utilities
- Electricity and Gas / Communications
- Heritage Site
- NaFRA Mapping**
- High
- Medium
- Low
- Very Low



Aberdeen House  
South Road  
Haywards Heath  
West Sussex  
RH16 4NG  
United Kingdom



[www.jbaconsulting.com](http://www.jbaconsulting.com)

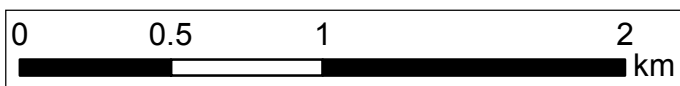
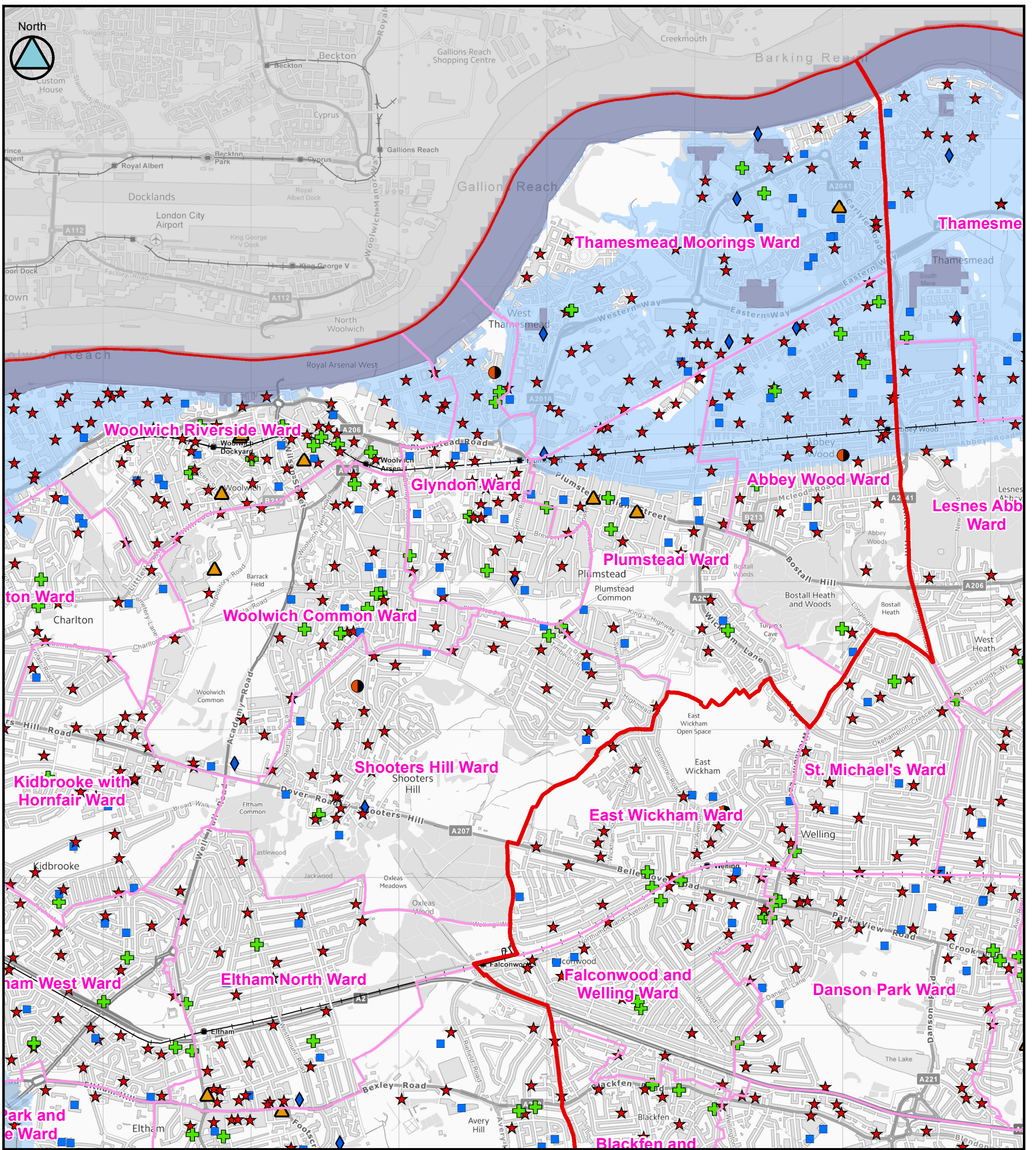
t +44 (0)1444 473 652  
f +44 (0)8458 627 772  
e info@jbaconsulting.com

for

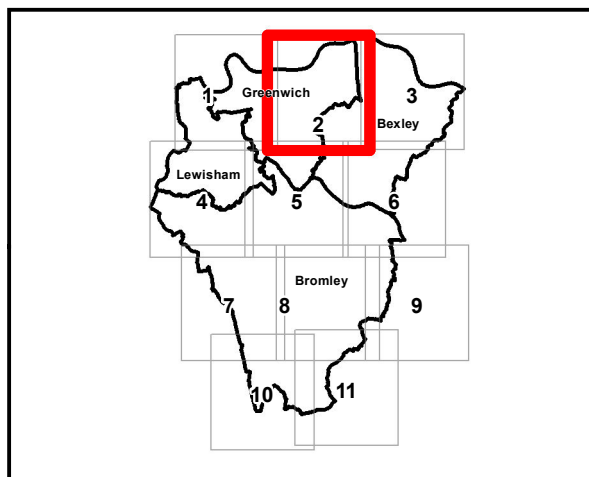
**SOUTH-EAST LONDON LOCAL FLOOD RISK MANAGEMENT STRATEGY**  
**National Flood Risk Assessment (NaFRA)**  
(Tile Number 1 of 11)

Contains Ordnance Survey data © Crown copyright and database right 2014.

This document is the property of Jeremy Benn Associates Ltd. It shall not be reproduced in whole or in part, nor disclosed to a third party, without the permission of Jeremy Benn Associates Ltd.



Key Plan



**Legend**

Wards	<b>National Receptors Database</b>	<b>NaFRA Mapping</b>
South-East London Boroughs	Education	High
<b>Economic Activity</b>	Healthcare and Medical Services	Medium
Railway Stations	Emergency Services	Low
Railway Track	Nursing, Retirement and Rest Homes	Very Low
	Water Utilities	
	Electricity and Gas / Communications	
	Heritage Site	



Aberdeen House  
South Road  
Haywards Heath  
West Sussex  
RH16 4NG  
United Kingdom



[www.jbaconsulting.com](http://www.jbaconsulting.com)

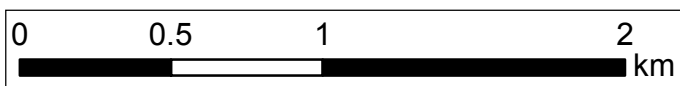
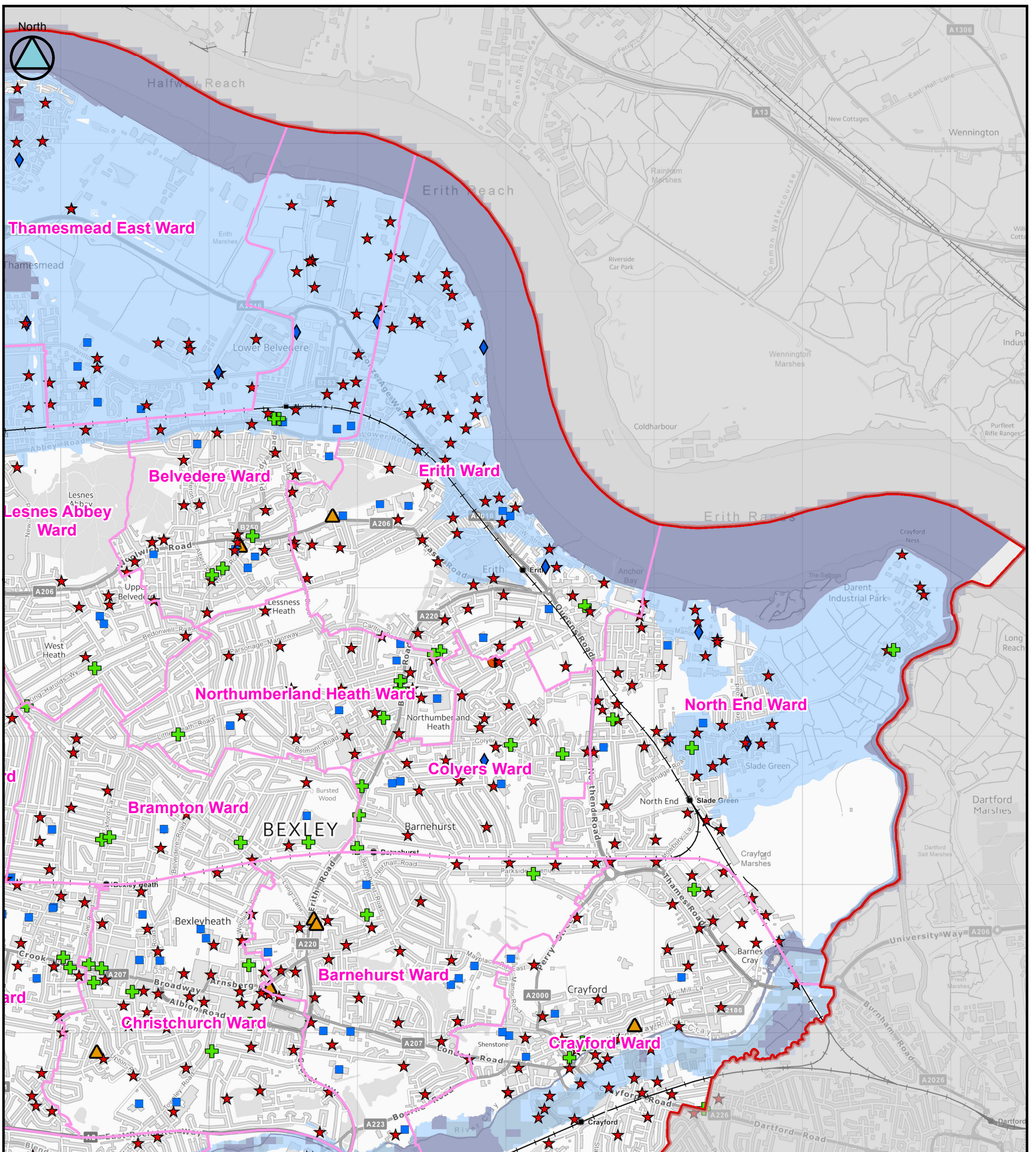
t +44 (0)1444 473 652  
f +44 (0)8458 627 772  
e [info@jbaconsulting.com](mailto:info@jbaconsulting.com)

for

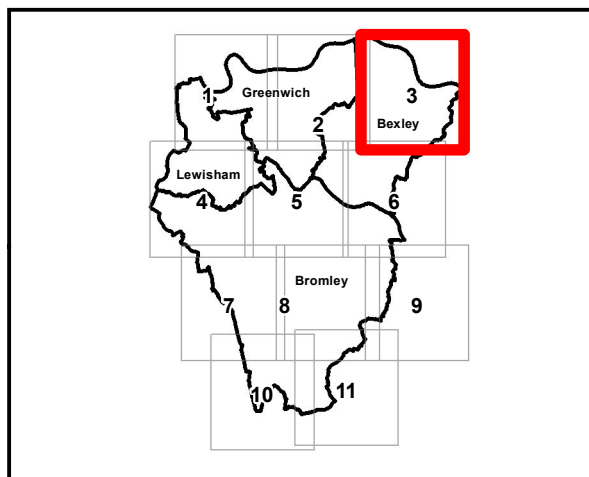
**SOUTH-EAST LONDON LOCAL FLOOD RISK MANAGEMENT STRATEGY**  
**National Flood Risk Assessment (NaFRA)**  
(Tile Number 2 of 11)

Contains Ordnance Survey data © Crown copyright and database right 2014.

This document is the property of Jeremy Benn Associates Ltd. It shall not be reproduced in whole or in part, nor disclosed to a third party, without the permission of Jeremy Benn Associates Ltd.



Key Plan



**Legend**

- Wards
- South-East London Boroughs
- Economic Activity**
- Railway Stations
- Railway Track
- National Receptors Database**
- Education
- Healthcare and Medical Services
- Emergency Services
- Nursing, Retirement and Rest Homes
- Water Utilities
- Electricity and Gas / Communications
- Heritage Site
- NaFRA Mapping**
- High
- Medium
- Low
- Very Low



Aberdeen House  
South Road  
Haywards Heath  
West Sussex  
RH16 4NG  
United Kingdom



[www.jbaconsulting.com](http://www.jbaconsulting.com)

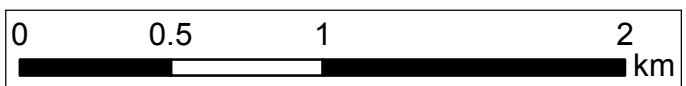
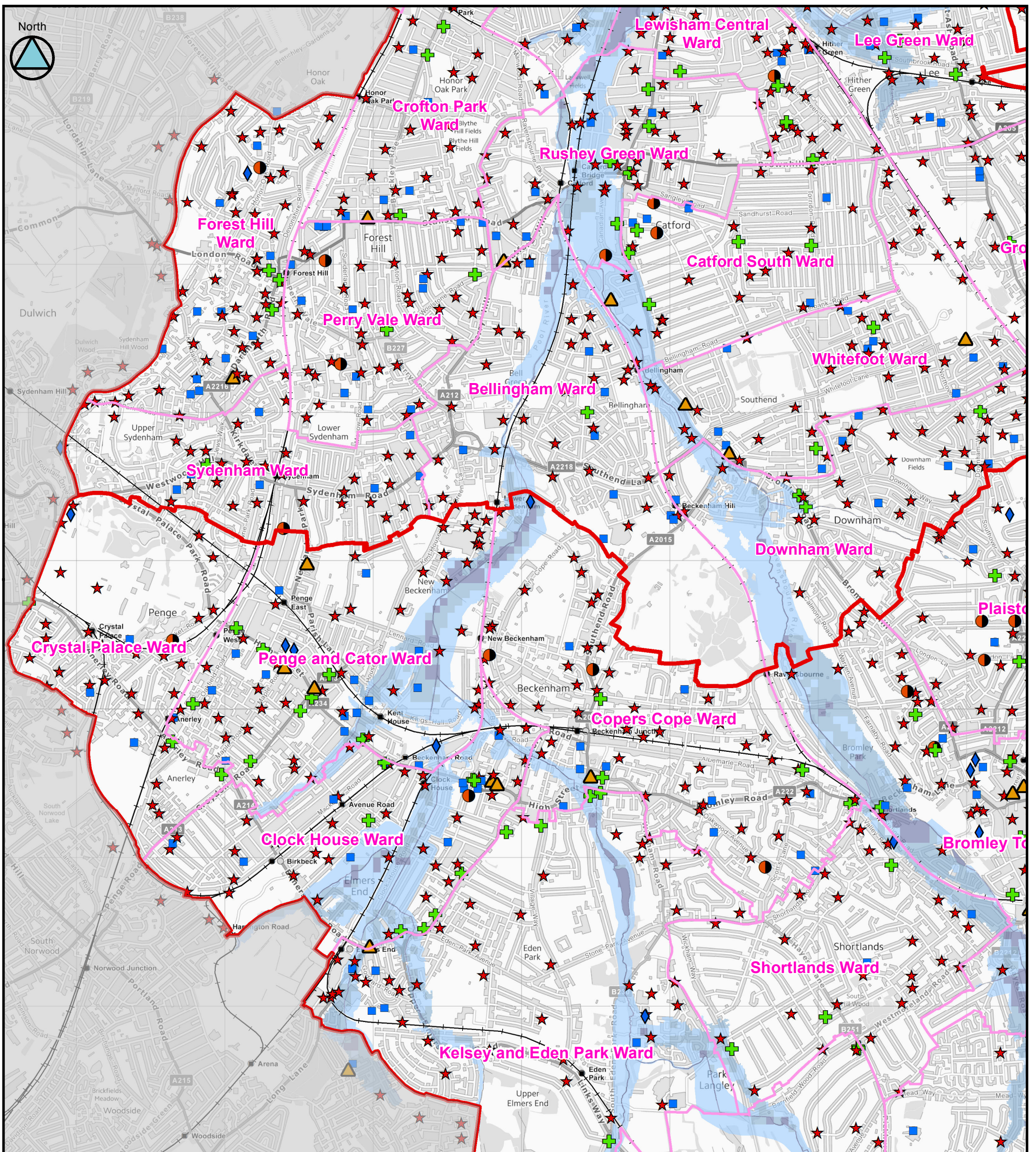
t +44 (0)1444 473 652  
f +44 (0)8458 627 772  
e [info@jbaconsulting.com](mailto:info@jbaconsulting.com)

for

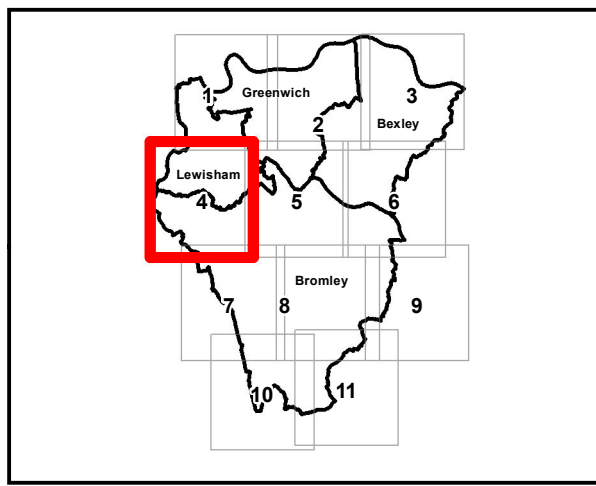
**SOUTH-EAST LONDON LOCAL FLOOD RISK MANAGEMENT STRATEGY**  
**National Flood Risk Assessment (NaFRA)**  
(Tile Number 3 of 11)

Contains Ordnance Survey data © Crown copyright and database right 2014.

This document is the property of Jeremy Benn Associates Ltd. It shall not be reproduced in whole or in part, nor disclosed to a third party, without the permission of Jeremy Benn Associates Ltd.



Key Plan



**Legend**

- Wards (pink outline)
- South-East London Boroughs (red outline)
- Economic Activity:
  - Railway Stations (black square)
  - Railway Track (black line with cross-ticks)
- National Receptors Database:
  - Education (blue square)
  - Healthcare and Medical Services (green cross)
  - Emergency Services (yellow triangle)
  - Nursing, Retirement and Rest Homes (orange circle)
  - Water Utilities (blue diamond)
  - Electricity and Gas / Communications (red star)
  - Heritage Site (pink star)
- NaFRA Mapping:
  - High (dark blue)
  - Medium (medium blue)
  - Low (light blue)
  - Very Low (very light blue)

Aberdeen House  
South Road  
Haywards Heath  
West Sussex  
RH16 4NG  
United Kingdom

[www.jbaconsulting.com](http://www.jbaconsulting.com)

t +44 (0)1444 473 652  
f +44 (0)8458 627 772  
e info@jbaconsulting.com

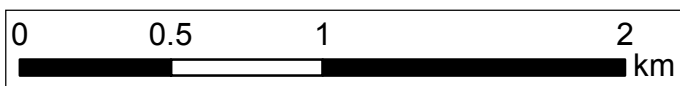
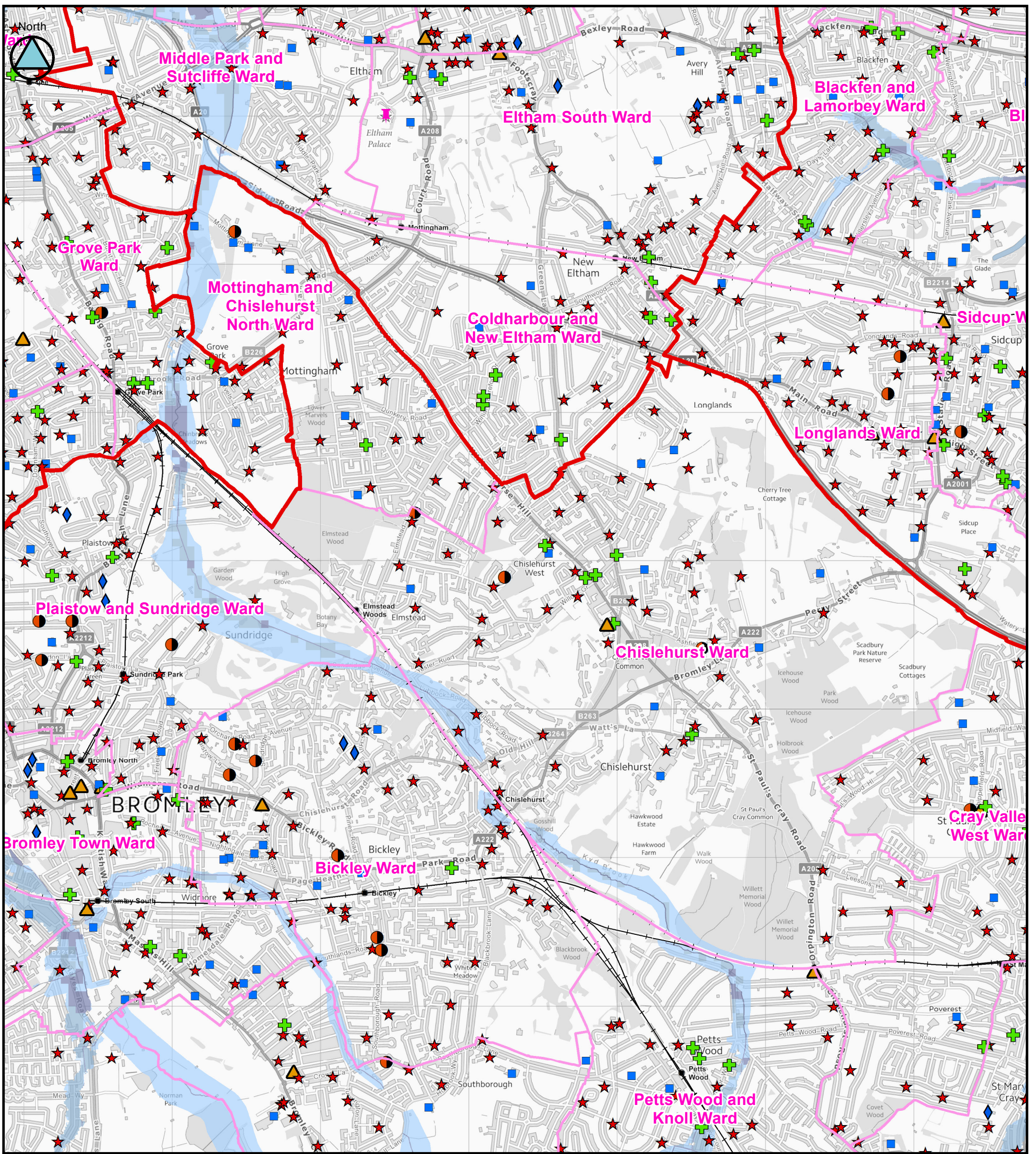
for

**SOUTH-EAST LONDON LOCAL FLOOD RISK MANAGEMENT STRATEGY**  
**National Flood Risk Assessment (NaFRA)**  
(Tile Number 4 of 11)

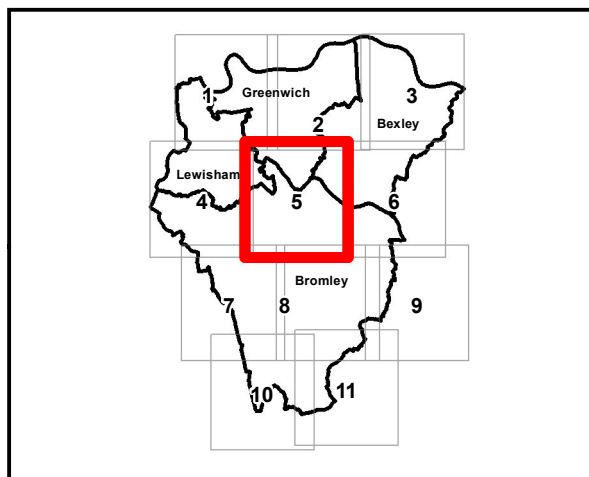
Contains Ordnance Survey data © Crown copyright and database right 2014.

This document is the property of Jeremy Benn Associates Ltd. It shall not be reproduced in whole or in part, nor disclosed to a third party, without the permission of Jeremy Benn Associates Ltd.

Original @ A3



Key Plan



**Legend**

Wards	<b>National Receptors Database</b>	<b>NaFRA Mapping</b>
South-East London Boroughs	Education	High
<b>Economic Activity</b>	Healthcare and Medical Services	Medium
Railway Stations	Emergency Services	Low
Railway Track	Nursing, Retirement and Rest Homes	Very Low
	Water Utilities	
	Electricity and Gas / Communications	
	Heritage Site	



Aberdeen House  
South Road  
Haywards Heath  
West Sussex  
RH16 4NG  
United Kingdom



[www.jbaconsulting.com](http://www.jbaconsulting.com)

t +44 (0)1444 473 652  
f +44 (0)8458 627 772  
e info@jbaconsulting.com

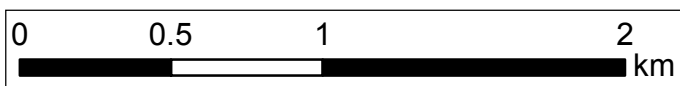
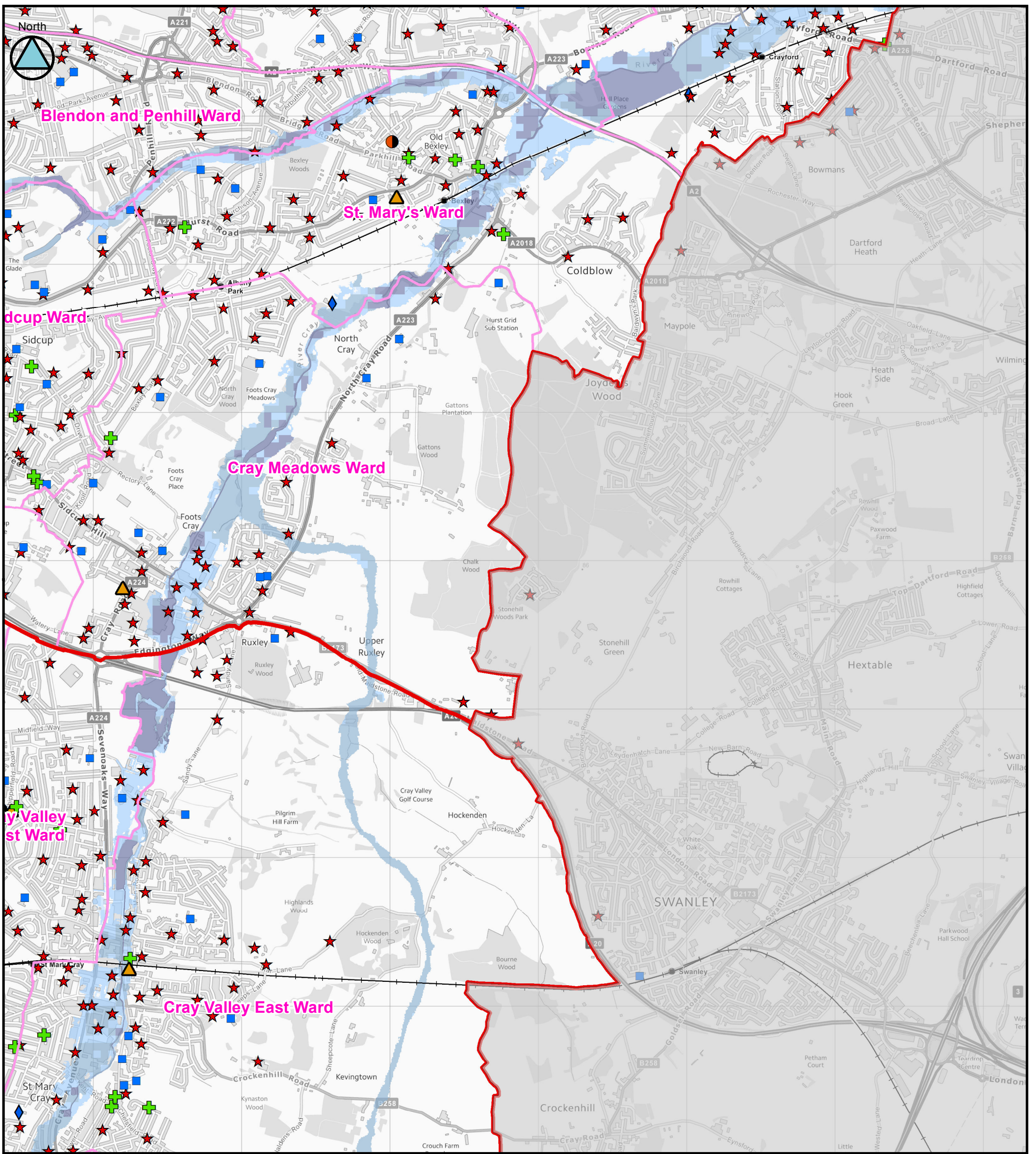
for

**SOUTH-EAST LONDON LOCAL FLOOD RISK MANAGEMENT STRATEGY**  
**National Flood Risk Assessment (NaFRA)**  
(Tile Number 5 of 11)

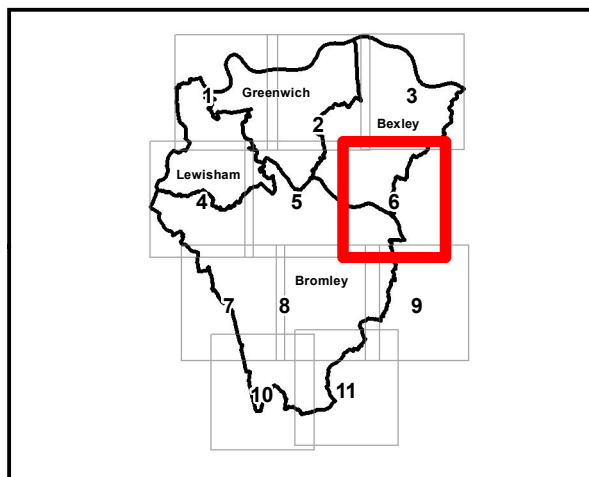
Contains Ordnance Survey data © Crown copyright and database right 2014.

This document is the property of Jeremy Benn Associates Ltd. It shall not be reproduced in whole or in part, nor disclosed to a third party, without the permission of Jeremy Benn Associates Ltd.

Original @ A3



Key Plan



**Legend**

- |                            |                                      |          |
|----------------------------|--------------------------------------|----------|
| Wards                      | <b>National Receptors Database</b>   | High     |
| South-East London Boroughs | Healthcare and Medical Services      | Medium   |
| <b>Economic Activity</b>   | Emergency Services                   | Low      |
| Railway Stations           | Nursing, Retirement and Rest Homes   | Very Low |
| Railway Track              | Water Utilities                      |          |
|                            | Electricity and Gas / Communications |          |
|                            | Heritage Site                        |          |



Aberdeen House  
South Road  
Haywards Heath  
West Sussex  
RH16 4NG  
United Kingdom



[www.jbaconsulting.com](http://www.jbaconsulting.com)

t +44 (0)1444 473 652  
f +44 (0)8458 627 772  
e [info@jbaconsulting.com](mailto:info@jbaconsulting.com)

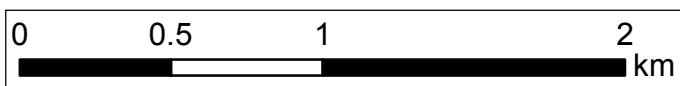
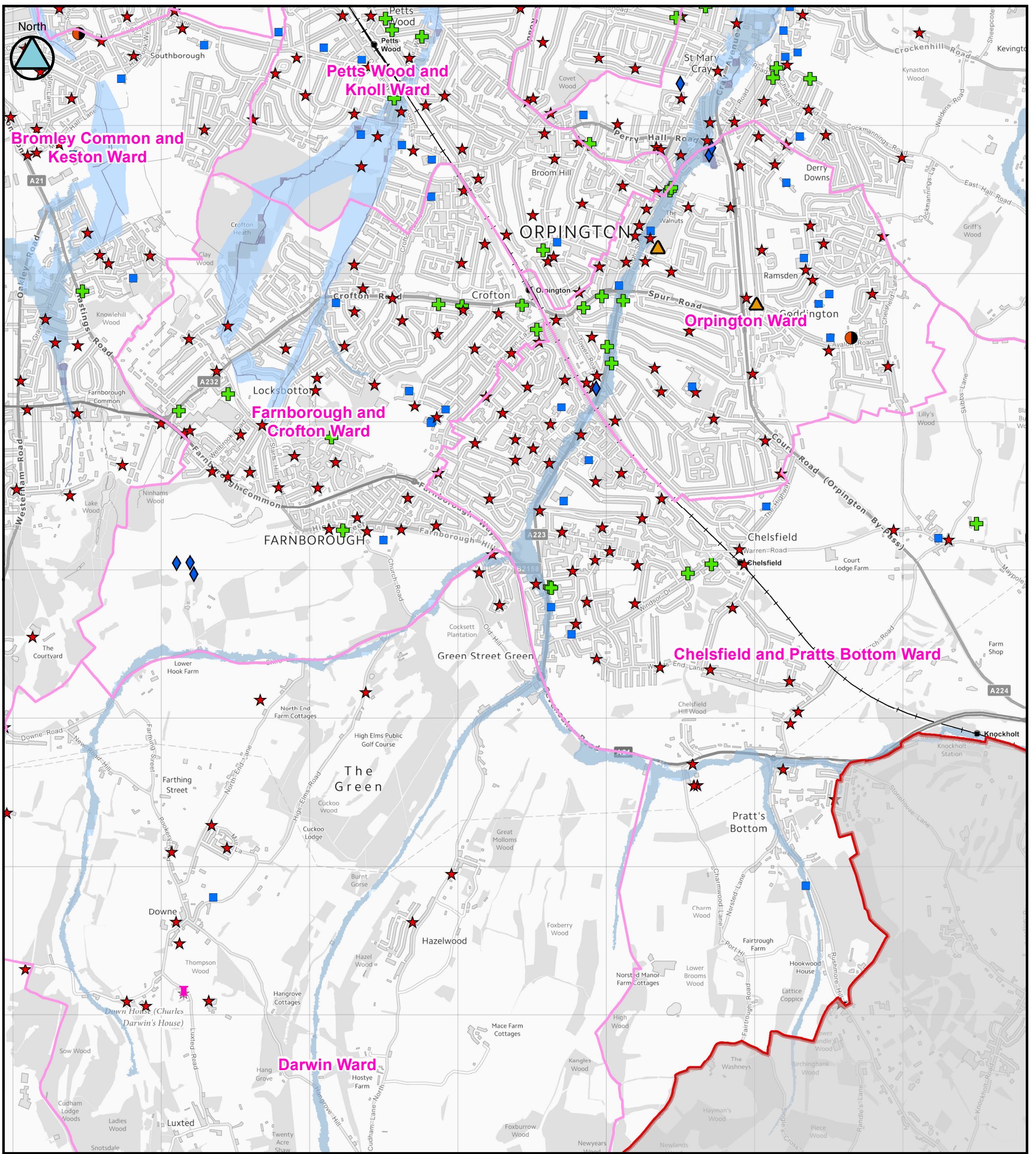
for

**SOUTH-EAST LONDON LOCAL FLOOD RISK MANAGEMENT STRATEGY**  
**National Flood Risk Assessment (NaFRA)**  
(Tile Number 6 of 11)

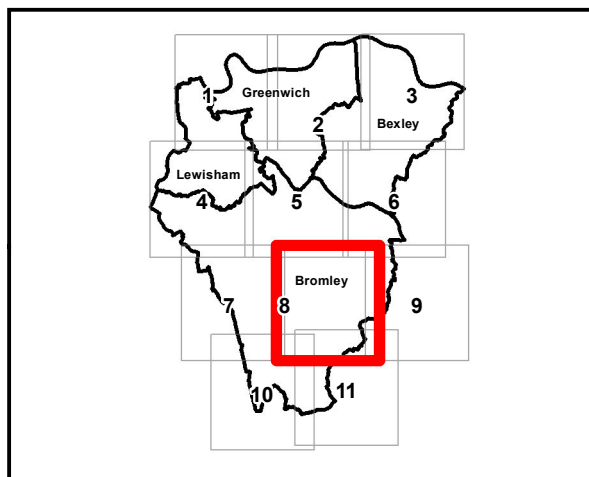
Contains Ordnance Survey data © Crown copyright and database right 2014.

This document is the property of Jeremy Benn Associates Ltd. It shall not be reproduced in whole or in part, nor disclosed to a third party, without the permission of Jeremy Benn Associates Ltd.





Key Plan



**Legend**

- |                            |                                      |                      |
|----------------------------|--------------------------------------|----------------------|
| Wards                      | <b>National Receptors Database</b>   | <b>NaFRA Mapping</b> |
| South-East London Boroughs | Education                            | High                 |
| <b>Economic Activity</b>   | Healthcare and Medical Services      | Medium               |
| Railway Stations           | Emergency Services                   | Low                  |
| Railway Track              | Nursing, Retirement and Rest Homes   | Very Low             |
|                            | Water Utilities                      |                      |
|                            | Electricity and Gas / Communications |                      |
|                            | Heritage Site                        |                      |



Aberdeen House  
South Road  
Haywards Heath  
West Sussex  
RH16 4NG  
United Kingdom



[www.jbaconsulting.com](http://www.jbaconsulting.com)

t +44 (0)1444 473 652  
f +44 (0)8458 627 772  
e [info@jbaconsulting.com](mailto:info@jbaconsulting.com)

for

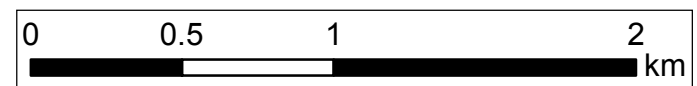
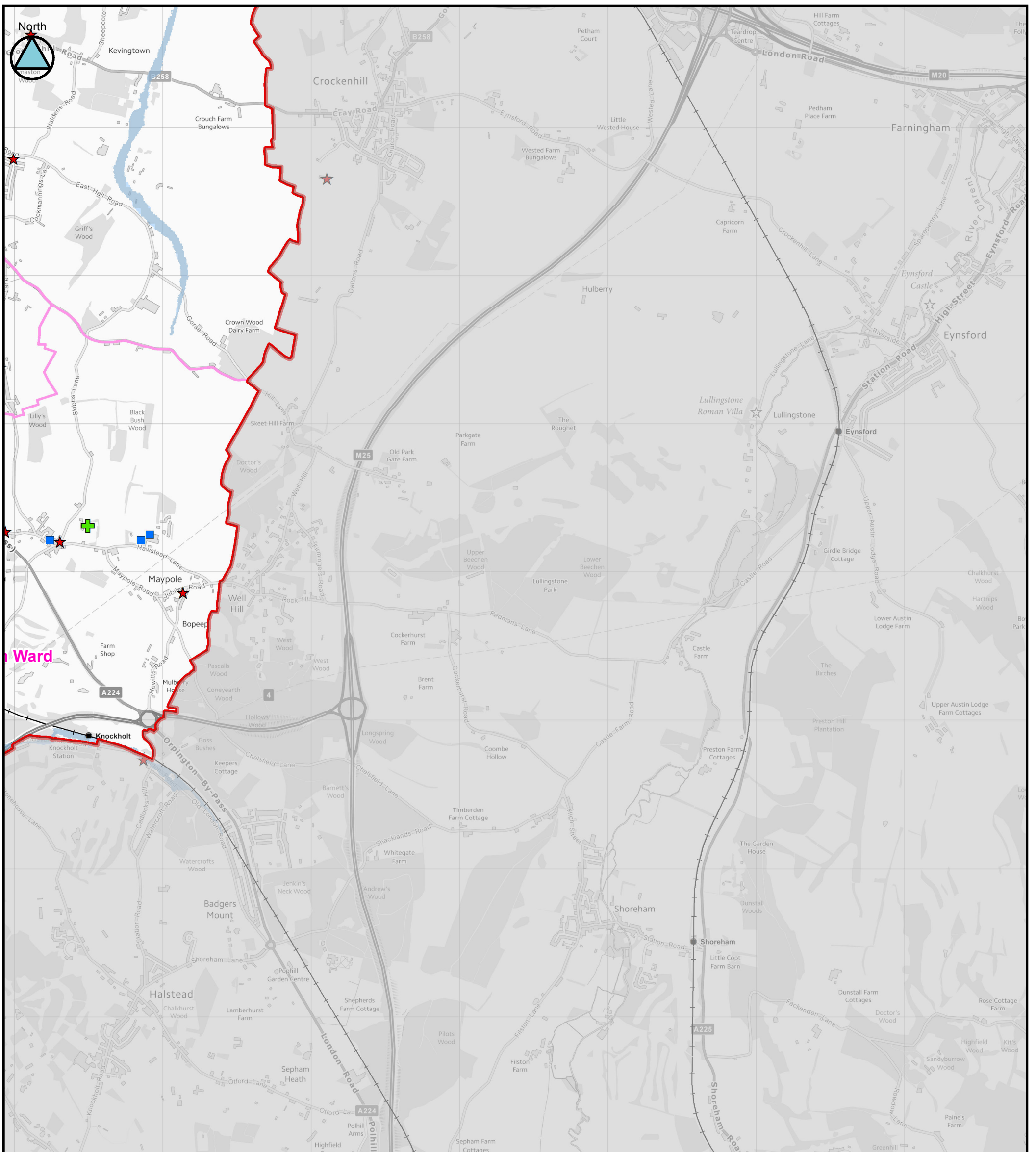
**SOUTH-EAST LONDON LOCAL FLOOD RISK MANAGEMENT STRATEGY**  
**National Flood Risk Assessment (NaFRA)**  
(Tile Number 8 of 11)

Contains Ordnance Survey data © Crown copyright and database right 2014.

This document is the property of Jeremy Benn Associates Ltd. It shall not be reproduced in whole or in part, nor disclosed to a third party, without the permission of Jeremy Benn Associates Ltd.

Original @ A3

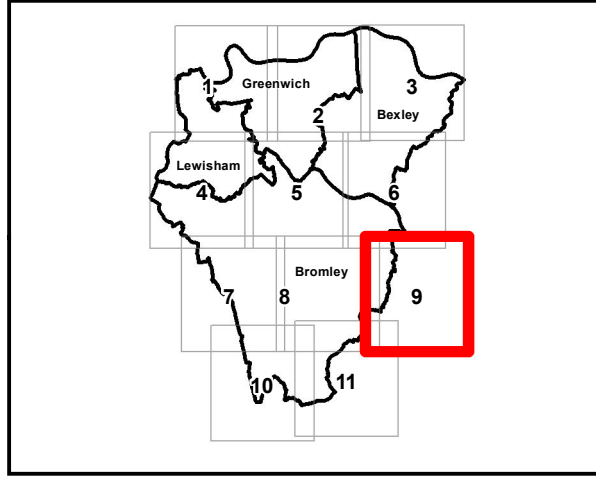





**Legend**


- Wards (pink outline)
- South-East London Boroughs (red outline)
- Economic Activity
  - Railway Stations (black square)
  - Railway Track (black line with cross-ticks)
- National Receptors Database
  - Education (blue square)
  - Healthcare and Medical Services (green cross)
  - Emergency Services (yellow triangle)
  - Nursing, Retirement and Rest Homes (orange circle)
  - Water Utilities (blue diamond)
  - Electricity and Gas / Communications (red star)
  - Heritage Site (pink star)
- NaFRA Mapping
  - High (dark blue square)
  - Medium (medium blue square)
  - Low (light blue square)
  - Very Low (very light blue square)

**Key Plan**





Aberdeen House  
South Road  
Haywards Heath  
West Sussex  
RH16 4NG  
United Kingdom



[www.jbaconsulting.com](http://www.jbaconsulting.com)

t +44 (0)1444 473 652  
f +44 (0)8458 627 772  
e info@jbaconsulting.com

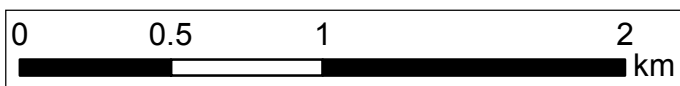
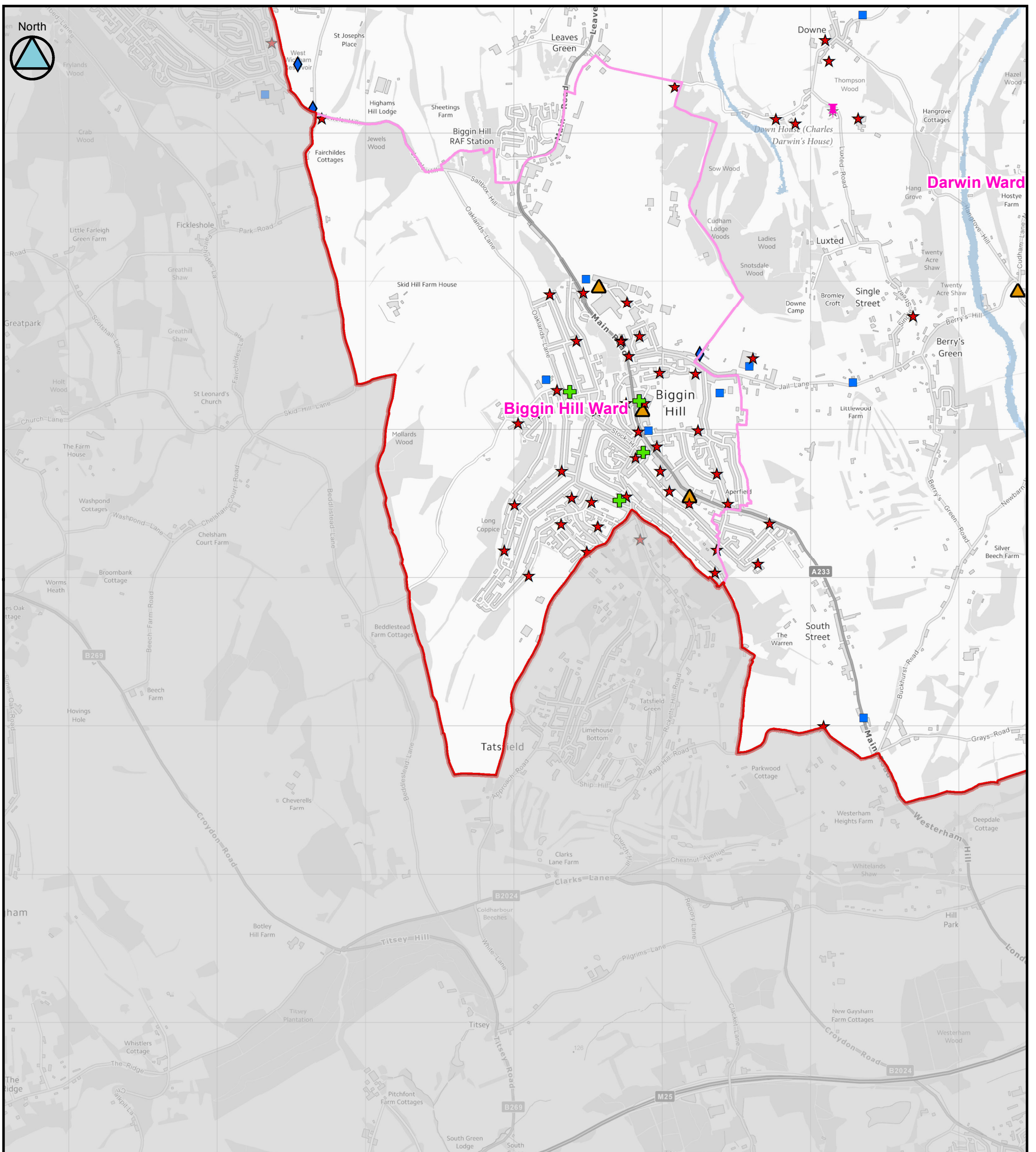
for

**SOUTH-EAST LONDON LOCAL FLOOD RISK MANAGEMENT STRATEGY**  
**National Flood Risk Assessment (NaFRA)**  
(Tile Number 9 of 11)

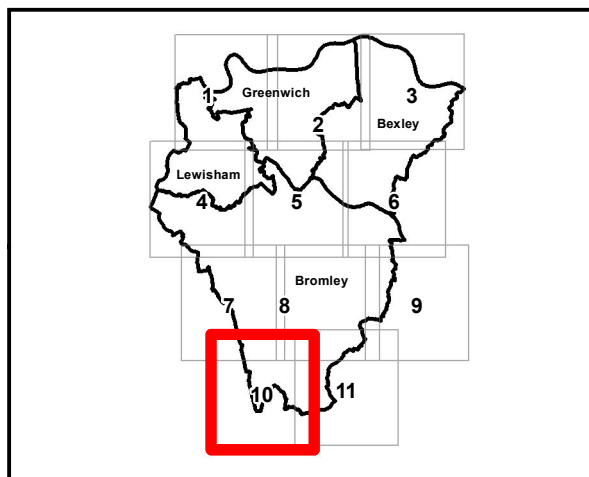
Contains Ordnance Survey data © Crown copyright and database right 2014.

This document is the property of Jeremy Benn Associates Ltd. It shall not be reproduced in whole or in part, nor disclosed to a third party, without the permission of Jeremy Benn Associates Ltd.

Original @ A3



Key Plan



**Legend**

- |                            |                                      |                      |
|----------------------------|--------------------------------------|----------------------|
| Wards                      | <b>National Receptors Database</b>   | <b>NaFRA Mapping</b> |
| South-East London Boroughs | Education                            | High                 |
| <b>Economic Activity</b>   | Healthcare and Medical Services      | Medium               |
| Railway Stations           | Emergency Services                   | Low                  |
| Railway Track              | Nursing, Retirement and Rest Homes   | Very Low             |
|                            | Water Utilities                      |                      |
|                            | Electricity and Gas / Communications |                      |
|                            | Heritage Site                        |                      |



Aberdeen House  
South Road  
Haywards Heath  
West Sussex  
RH16 4NG  
United Kingdom



[www.jbaconsulting.com](http://www.jbaconsulting.com)

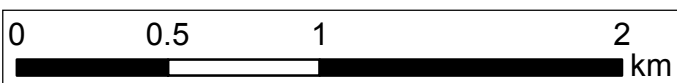
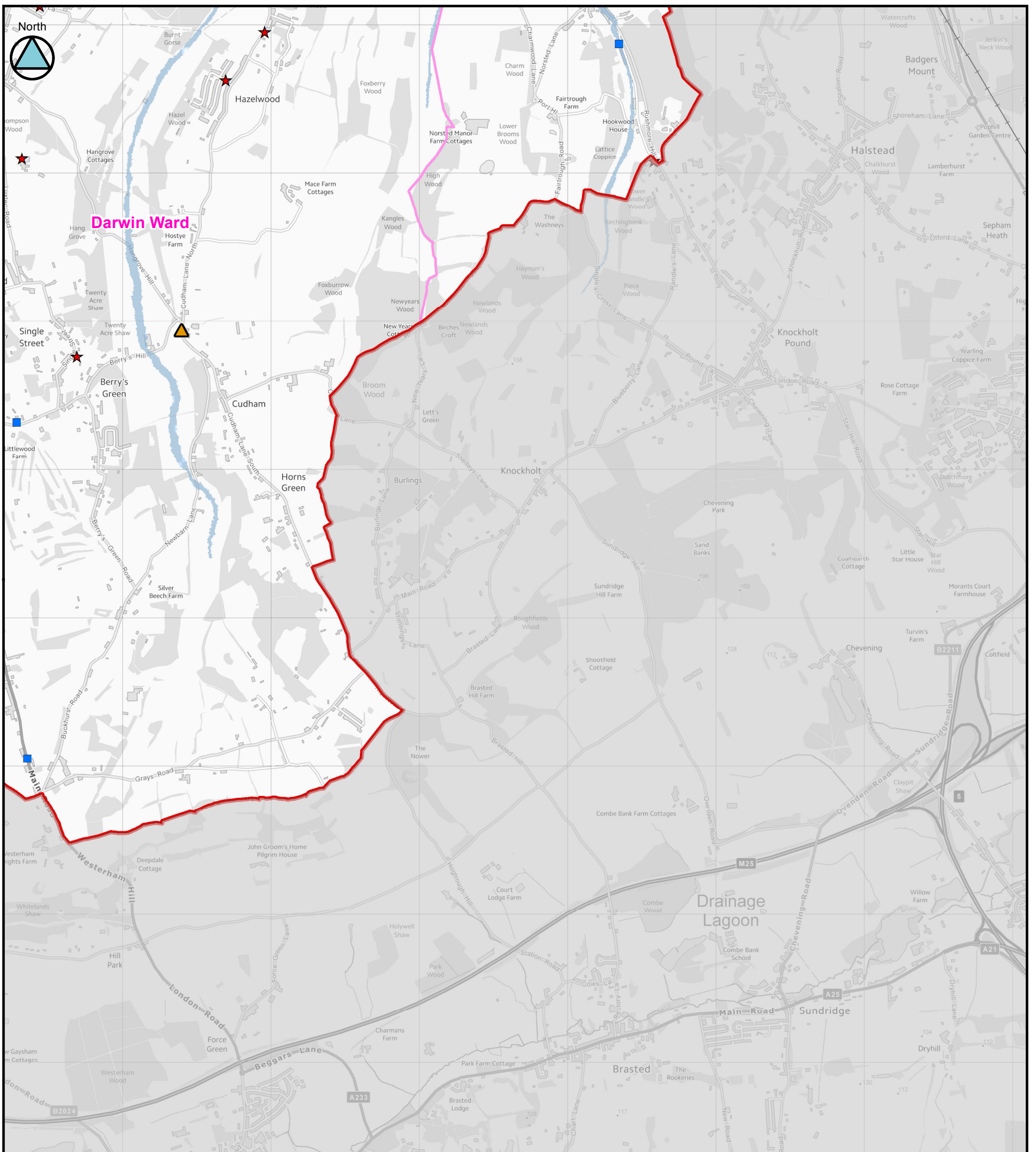
t +44 (0)1444 473 652  
f +44 (0)8458 627 772  
e [info@jbaconsulting.com](mailto:info@jbaconsulting.com)

for

**SOUTH-EAST LONDON LOCAL FLOOD RISK MANAGEMENT STRATEGY**  
**National Flood Risk Assessment (NaFRA)**  
(Tile Number 10 of 11)

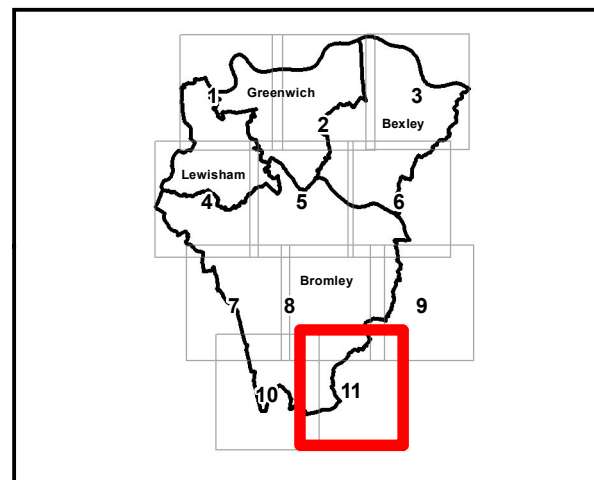
Contains Ordnance Survey data © Crown copyright and database right 2014.

This document is the property of Jeremy Benn Associates Ltd. It shall not be reproduced in whole or in part, nor disclosed to a third party, without the permission of Jeremy Benn Associates Ltd.



Legend	
	Wards
	South-East London Boroughs
	Railway Stations
	Railway Track
	Education
	Healthcare and Medical Services
	Emergency Services
	Nursing, Retirement and Rest Homes
	Water Utilities
	Electricity and Gas / Communications
	Heritage Site
	High
	Medium
	Low
	Very Low

Key Plan



Aberdeen House  
South Road  
Haywards Heath  
West Sussex  
RH16 4NG  
United Kingdom



[www.jbaconsulting.com](http://www.jbaconsulting.com)

t +44 (0)1444 473 652  
f +44 (0)8458 627 772  
e [info@jbaconsulting.com](mailto:info@jbaconsulting.com)

Offices at Coleshill, Doncaster, Edinburgh,  
Haywards Heath, Limerick, Newcastle, Newport, Saltire, Skipton,  
Tadcaster, Thirsk, Wallingford and Warrington

for

## SOUTH-EAST LONDON LOCAL FLOOD RISK MANAGEMENT STRATEGY

### National Flood Risk Assessment (NaFRA)

(Tile Number 11 of 11)

Contains Ordnance Survey data © Crown copyright and database right 2014.

This document is the property of Jeremy Benn Associates Ltd. It shall not be reproduced in whole or in part, nor disclosed to a third party, without the permission of Jeremy Benn Associates Ltd.

Original @ A3